

8/16/32-Port Cat 5 KVM Switch

KH1508A / KH1516A / KH1532A

- The KH1508A, KH1516A and KH1532A KVM switches are control units that allow IT administrators to access and control multiple computers from a single PS/2 or USB KVM console (keyboard, monitor, and mouse). Operators can take control of up to 8 (KH1508A), 16 (KH1516A), or 32 (KH1532A) computers. By daisy chaining up to 31 additional switches, as many as 1024 computers can be controlled from a central KVM console.

These switches have been designed with unique and powerful features that enable administrators to manage their entire server room and data center devices easily and conveniently.

For example, the advanced Adapter ID feature stores the Adapter Cable's configuration information – such as its ID, port name, OS, keyboard language, and more. This feature allows administrators to relocate servers to different ports without having to reconfigure the adapters. Other advantages found with these switches includes Full HD video quality and the ability to extend the distance to the servers to up to 50 m* at a resolution of 1280 x 1024.

A KH1508A, KH1516A or KH1532A installation provides one of the best and most economical solutions ATEN has to offer the SMB market. There is no better way to save a data center time, space, and money than with a KH1508A, KH1516A or KH1532A KVM switch.

*With KVM Adapter Cable KA7000 series, please see page 3 for details.

Front View

KH1508A



KH1516A



KH1532A



Rear View

KH1508A



KH1516A



KH1532A



Features

- One KVM console controls up to 8, 16, or 32 directly connected computers
- Space-Saving RJ-45 connectors and Cat 5e/6 cabling
- By daisy chaining up to 31 additional KH1508A / KH1516A / KH1532A switches, as many as 1024 computers can be controlled from the original KVM console
- Console conversion – any KVM console can control any type of computer; mixed combinations (PS/2 & USB) are supported on both the KVM console and computer sides
- Superior video quality – supports video resolutions up to 1920 x 1200 @ 60 Hz up to 30 meters, 1600 x 1200 @ 60 Hz up to 40 meters, and 1280 x 1024 @ 75 Hz up to 50 meters*
- Configure port access rights for users on a port-by-port basis
- Three port selection methods: Manual (via front panel pushbuttons), Hotkey, and multi-language OSD (On Screen Display)
- Multiplatform support – PC, Mac, Sun, and serial
- Multiple user accounts – supports up to 10 user and 1 administrator accounts
- Two-Level password security – supports one administrator and ten user profiles. Password protection prevents unauthorized access to the installation
- Auto Scan mode enables continuous monitoring of user-selected computers
- Broadcast Mode sends commands from the console to all computers – allowing you to perform operations (such as software installations, upgrades, shutdowns, etc.), on all computers simultaneously
- Adapter ID feature
- Firmware Upgradeable

* With KVM Adapter Cable KA7000 series, please see page 3 for details.

Highlights

Easy Operation	Three port selection methods: Manual (via front panel pushbuttons), Hotkey, and multi-language OSD (On Screen Display). Multi-language keyboard support includes US English, UK English, French, German, Swiss, German, Hungarian, Italian, Japanese, Korean, Russian, Spanish, Swedish and Traditional Chinese.
Auto Scanning and Broadcast Mode	Auto Scan provides hands-free monitoring of selected devices at changeable speeds. Broadcast Mode sends commands from the console to all computers – allowing you to perform operations (such as software installations, upgrades, shutdowns, etc.), on all computers simultaneously.
Superior Video Quality	Supports video resolutions up to 1920 x 1200 @ 60 Hz up to 30 meters, 1600 x 1200 @ 60 Hz up to 40 meters, and 1280 x 1024 @ 75 Hz up to 50 meters*
Multiple User Accounts	Supports up to 10 user and 1 administrator accounts.

Space-Saving RJ-45 Connectors and Cat 5e/6 Cabling

This space-saving innovation means that the KH1508A / KH1516A / KH1532A can be conveniently installed in a 1U system rack, and the installation can take advantage of the internal network wiring built into most modern commercial buildings. This reduces cable clutter for a neat and tidy data center environment.

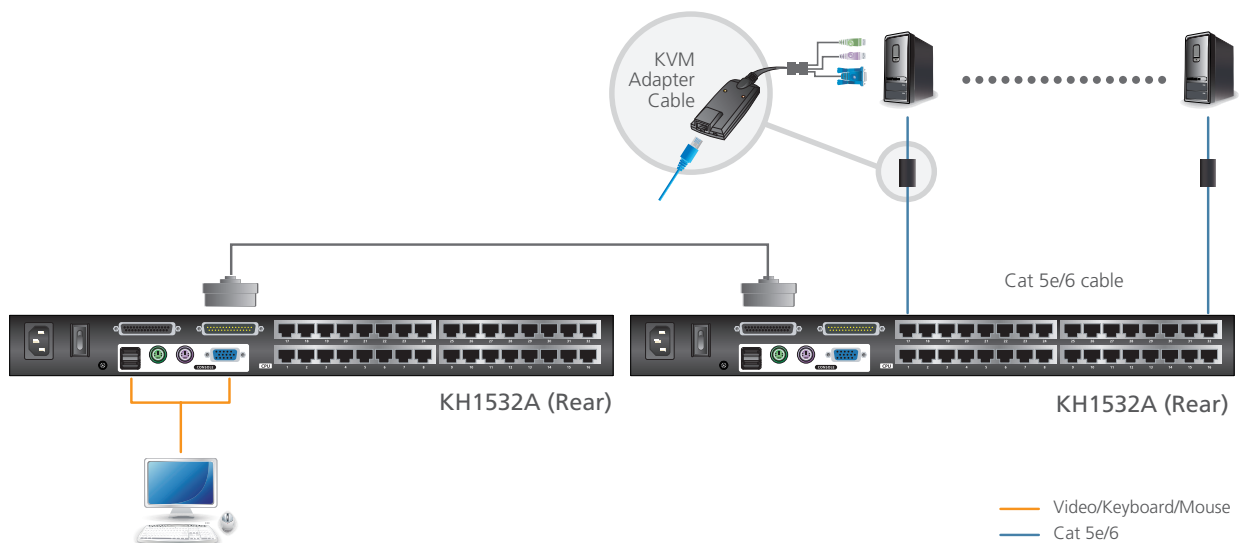
Adapter Cables with ID Function

The KH1508A / KH1516A / KH1532A KVM switch series supports automatic ID recognition of the new ATEN KVM Cable Adapter KA7000 series. Using the new adapters with an ID means no cables need to be reconfigured when moving them from port to port. Device ID and attributes are stored in the adapter cables allowing you to hot-swap port connections without having to change the settings.

*With KVM Adapter Cable KA7000 series.

The following KVM Adapter Cables are required for use with the KH1508A / KH1516A / KH1532A:

Type:	PS/2	USB	PS/2	USB	Sun Legacy	Serial	USB	USB	USB
Interface:	6-pin Mini-DIN Male 6-pin Mini-DIN Male HDB-15 Male	USB Type A Male HDB-15 Male	6-pin Mini-DIN Male 6-pin Mini-DIN Male HDB-15 Male	USB Type A Male HDB-15 Male	13W3 Male DIN 8 pin Male	RS-232 DB-9 Female	USB Type A Male USB Type A Male DVI-D Male (Single Link)	USB Type A Male USB Type A Male HDMI Male	USB Type A Male USB Type A Male DisplayPort Male



Specifications

Function	KH1508A	KH1516A	KH1532A
Computer Connections			
Direct	8	16	32
Maximum	256 (via Daisy-chain)	512 (via Daisy-chain)	1024 (via Daisy-chain)
Port Selection	OSD, Hotkey, Pushbutton		
Connectors			
Console Ports	2 x USB Type A Female 1 x 6-pin Mini-DIN Female (Purple) 1 x 6-pin Mini-DIN Female (Green) 1 x HDB-15 Female (Blue)		
KVM Ports	8 x RJ-45 Female	16 x RJ-45 Female	32 x RJ-45 Female
Daisy Chain Ports	1 x DB-25 Female (Black) 1 x DB-25 Male (Black)		
Firmware Upgrade	1 x RJ-11 Female (Black)		
Power	1 x IEC 60320/C14		
Switches			
Port Selection	8 x Pushbutton	16 x Pushbutton	32 x Pushbutton
Reset	1 x Semi-recessed Pushbutton		
Firmware Upgrade	1 x Slide		
Power	1 x Rocker		
LEDs			
Online	8 (Green)	16 (Green)	32 (Green)
Selected	8 (Orange)	16 (Orange)	32 (Orange)
Power	1 (Blue)		
Station ID	1 x 2 Digit 7-segment (Orange)		
Emulation			
Keyboard / Mouse	PS/2; USB		
Scan Interval	1 - 255 sec.		
Video	1920 x 1200 @ 60 Hz (30 m*); 1600 x 1200 @ 60 Hz (40 m*); 1280 x 1024 @ 75 Hz (50 m*)		
Maximum Input Power Rating	100-240V AC; 50/60 Hz; 1A		
Power Consumption	120V/5.8W; 230V/6W	120V/5.9W; 230V/6.1W	110V/4.6W; 220V/4.8W
Environmental			
Operating Temperature	0° to 40° C		
Storage Temperature	-20° to 60° C		
Humidity	0 - 80% RH, Non-condensing		
Physical Properties			
Housing	Metal		
Weight	2.65 kg	2.67 kg	2.81 kg
Dimensions (L x W x H)	43.72 x 16.36 x 4.40 cm		

* With KVM Adapter Cable KA7000 series, please see page 3 for details.

