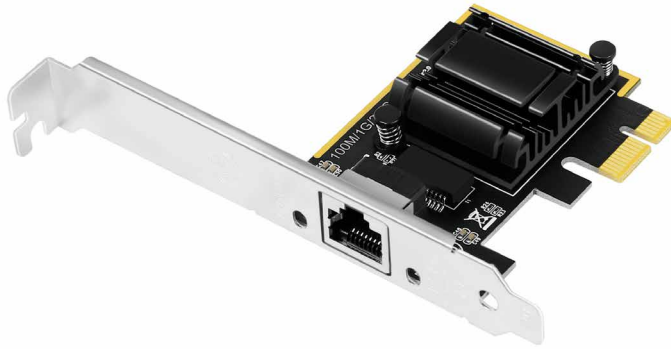


LogiLink®



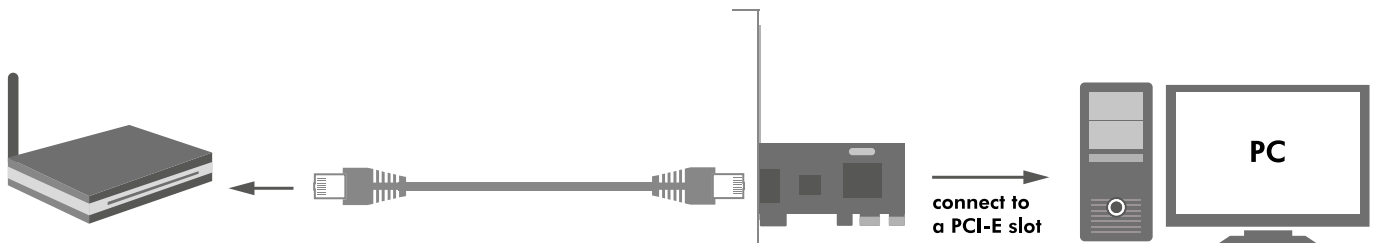
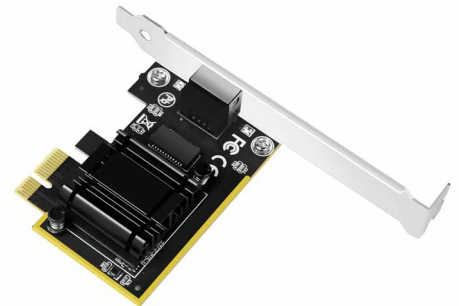
2.5 Gigabit PCI Express Card

Art. No.: PC0087

Easy to add or expand high performance 2.5 Gigabit Ethernet connectivity to any compatible computer.

Features:

- » PCI Express 1-lane interface
- » Compliant with PCI Express 2.1
- » Supports data transfer rate up to 2.5 Gbps
- » Compliant with the IEEE802.3, IEEE802.3u, IEEE802.3ab, IEEE802.3az and IEEE802.3bz standards
- » Supports Auto-negotiation, Auto MDI/MDI-X, Jumbo Frame and Wake On LAN (WOL)
- » LED indicator for Link/Activity
- » Supports Windows and Linux



Download the driver online if required: <http://downloads.2direct.de/treiber/PC0087.zip>



Specifications:

Chipset	RTL8125B
Port	1x RJ45 Port
Power By	PCI express bus powered
Ethernet Standard	IEEE802.3, IEEE802.3u, IEEE802.3ab, IEEE802.3az and IEEE802.3bz



*The specifications and pictures are subject to change without prior notice.
*All trade names referenced are the registered trademarks of their respective owners.



Ethernet Speed	2.5 Gbps
Full Duplex Flow Control (IEEE802.3x)	Yes
Layer 2 Priority Encoding (IEEE 802.1P)	Yes
VLAN Tagging (IEEE802.1Q)	Yes
Supports WOL (Wake-On-LAN)	Yes
LED Indicator	LED for Activity
Power Consumption (Max.)	0.35 W
Standby Power Consumption	0.35 W
Compatibility	Windows and Linux
Operating Temperature	-10~55°C
Operating Humidity	5~90% RH (no condensation)
Dimensions	7.15 x 12 x 2.2 cm
Weight	46 g

Package Contents:

- » 1x PCI-E Gigabit LAN Card
- » 1x Low Profile Bracket
- » 1x User Manual

Package Information:

- » Packing Dimension: 150 x 135 x 30 mm
- » Packing Weight: 0.06 kg
- » Carton Dimension: 430 x 340 x 320 mm
- » Carton Q'ty: 60 pcs
- » Carton Weight: 4.6 kg



*The specifications and pictures are subject to change without prior notice.
 *All trade names referenced are the registered trademarks of their respective owners.

